

ukp 
Ceramic Tiles

**INDUS
CROMA**

Shining the World

Floor Tiles



INDUS
CROMA



Company Profile

Welcome to the shining world of *Indus Croma*.....

UKP Group is pleased to introduce their premium quality FLOOR TILES under brand name *Indus Croma* to their customers at national as well as international market.

UKP Ceramic Division is India's leading manufacturer & exporter of Ceramic Tiles. Today, Group's brands & products are being catered to more than 25 Countries across Africa, Europe, Middle-East, Europe, Central & Latin America.

With an autonomous Plant, qualified technocrats, computerized quality control system we produce best quality floor tiles. We at **UKP** are committed to ensure customer's delight, providing an exclusive range of new designs for better value for your money and quality in manufacturing, product and operation.

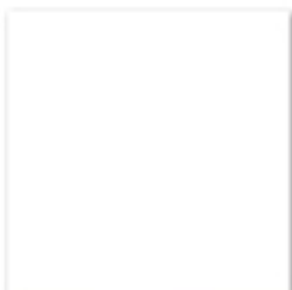
See for yourself.....The right choice.....

Indus Croma.....

Plain Colours

300 x 300 mm

ukp Ceramic Tiles



1001-White



2001-Ivory



3001-Blue



3501-Pista Green



7001-Grey



4851-Pink



S-9001-Alpine Blue



S-300-Teracota Brown



S-8001-Croma Green



S-4751-Magenta



S-4700-Aqua Green

Anti Skid

300 x 300 mm

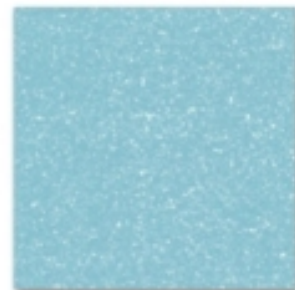
INDUS
CROMA



1000-White



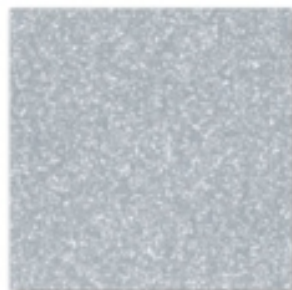
2010-Ivory



3002-Blue



3502-Pista Green



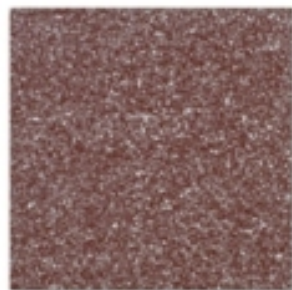
7002-Grey



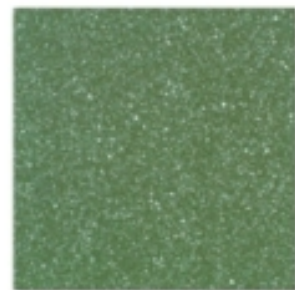
4852-Pink



S-9000-Alpine Blue



S-310-Teracota Brown



S-8000-Croma Green



S-4752-Magenta

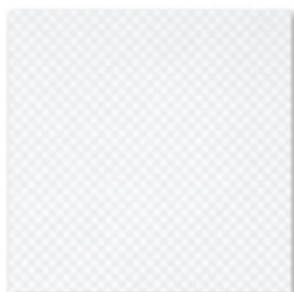


S-4701-Aqua Green

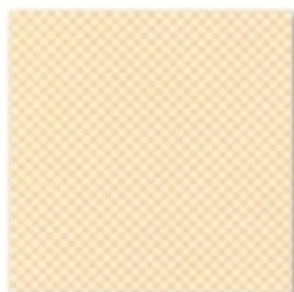
Spheres Series

300 x 300 mm

ukp Ceramic Tiles



1075-White



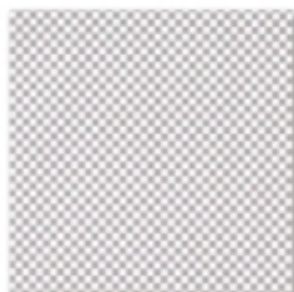
2000-Ivory



3003-Blue



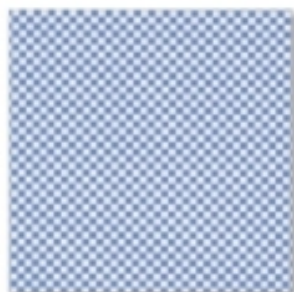
3503-Pista Green



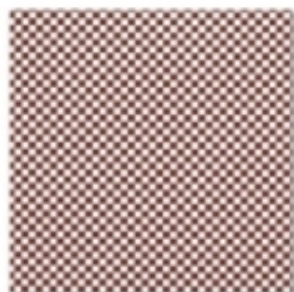
7003-Grey



4853-Pink



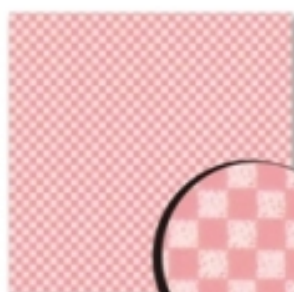
S-9002-Alpine Blue



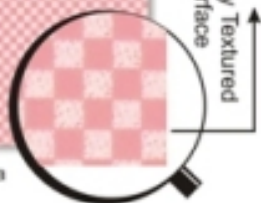
S-311-Teracota Brown



S-8002-Croma Green



S-4753-Magenta



Specially Textured Surface



S-4702-Aqua Green

Ark Series

300 x 300 mm

INDUS
CROMA



1077-White



2075-Ivory



3004-Blue



3504-Pista Green



7004-Grey



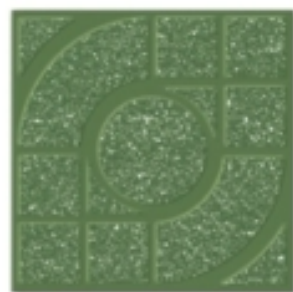
4854-Pink



S-9003-Alpine Blue



S-312-Teracota Brown



S-8003-Croma Green



S-4754-Magenta



S-4703-Aqua Green

Drop Grip Series

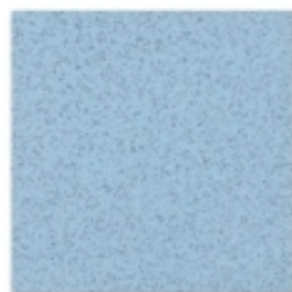
300 x 300 mm



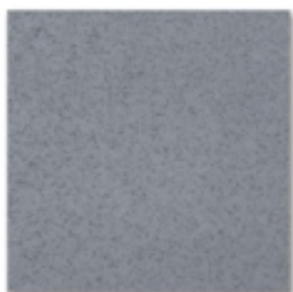
1076



2078



3005



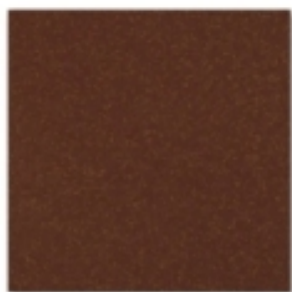
7005



4855



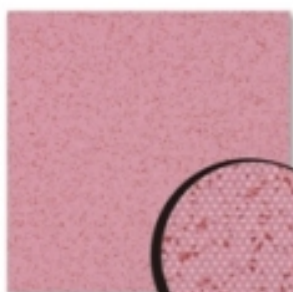
S-9006



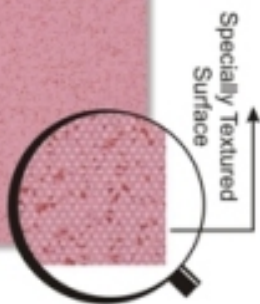
S-315



S-8004



S-4755



Specially Textured Surface

Stone Series

300 x 300 mm

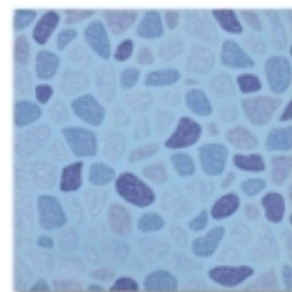
INDUS
CROMA



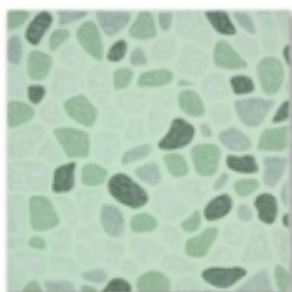
5501



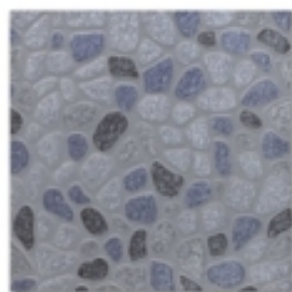
5502



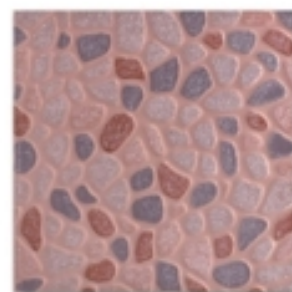
5503



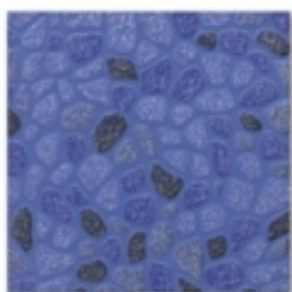
5504



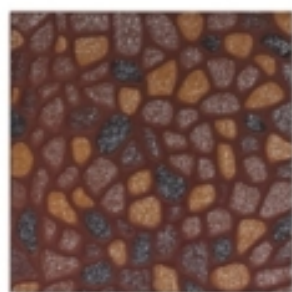
5505



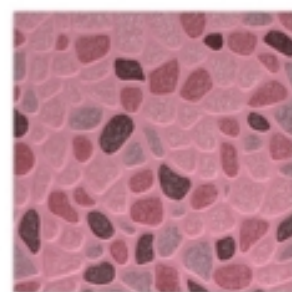
5506



S-5507



S-5508

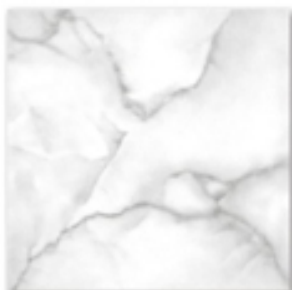


S-5510

White Matt Series

300 x 300 mm

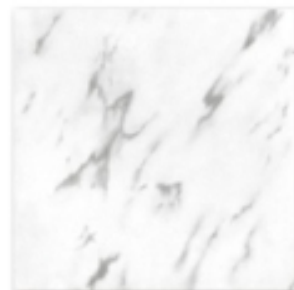
ukp Ceramic Tiles



1010



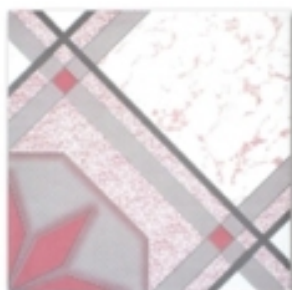
1012



1023



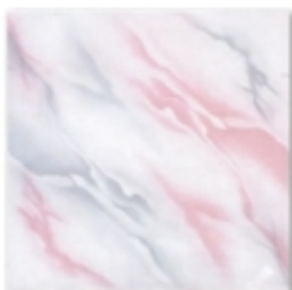
1051



1054



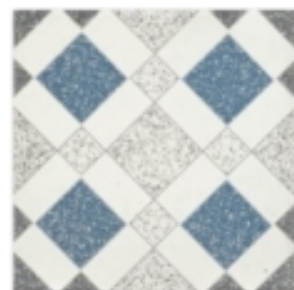
1057



1072



1085



1091



1092



1093

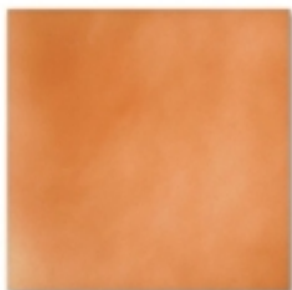


Display of No. 1091

Ivory Matt Series

300 x 300 mm

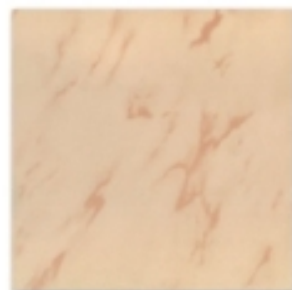
ukp Ceramic Tiles



4000-Copper Cloudy



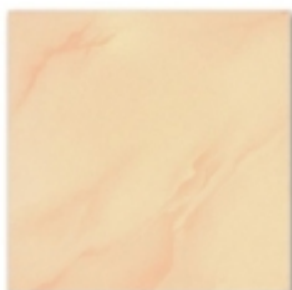
2008



2009



2016



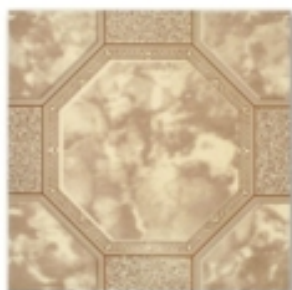
2017



2019



2038



2069



2070



2086



2087



2088

Ivory Matt Series

300 x 300 mm

INDUS
CROMA



2089



Display of No. 2087

White Glossy Series

300 x 300 mm

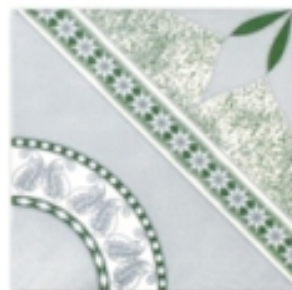
ukp Ceramic Tiles



1514



1520



1521



1527



1531



1532

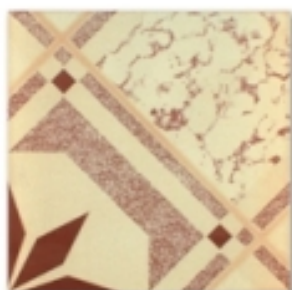


1533

Ivory Glossy Series



2508



2514

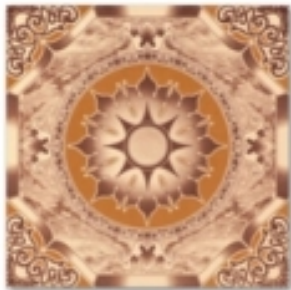


2515

Bhama Glossy Series

300 x 300 mm

INDUS
CROMA



5001



5003



5006



5011



5012



Display of No. 1531

Wooden Glossy Series

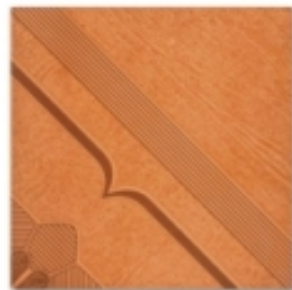
300 x 300 mm



102



103



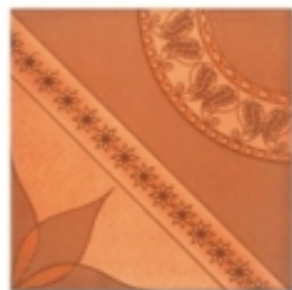
104



105



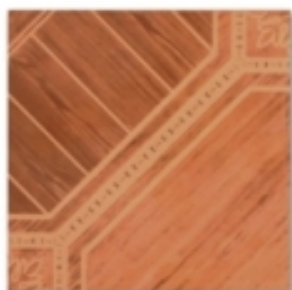
106



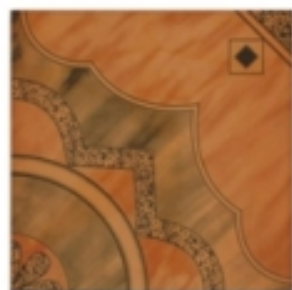
107



108



115



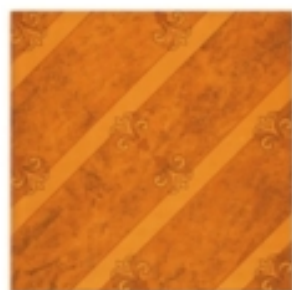
116



117



121

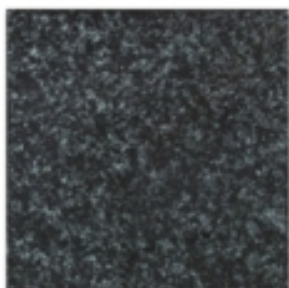


122

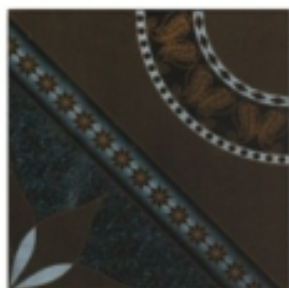
Black Glossy Series

300 x 300 mm

INDUS
CROMA



506



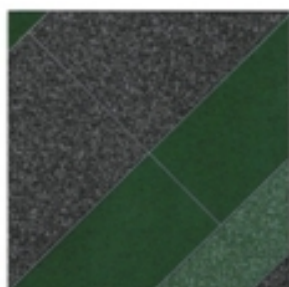
514



517

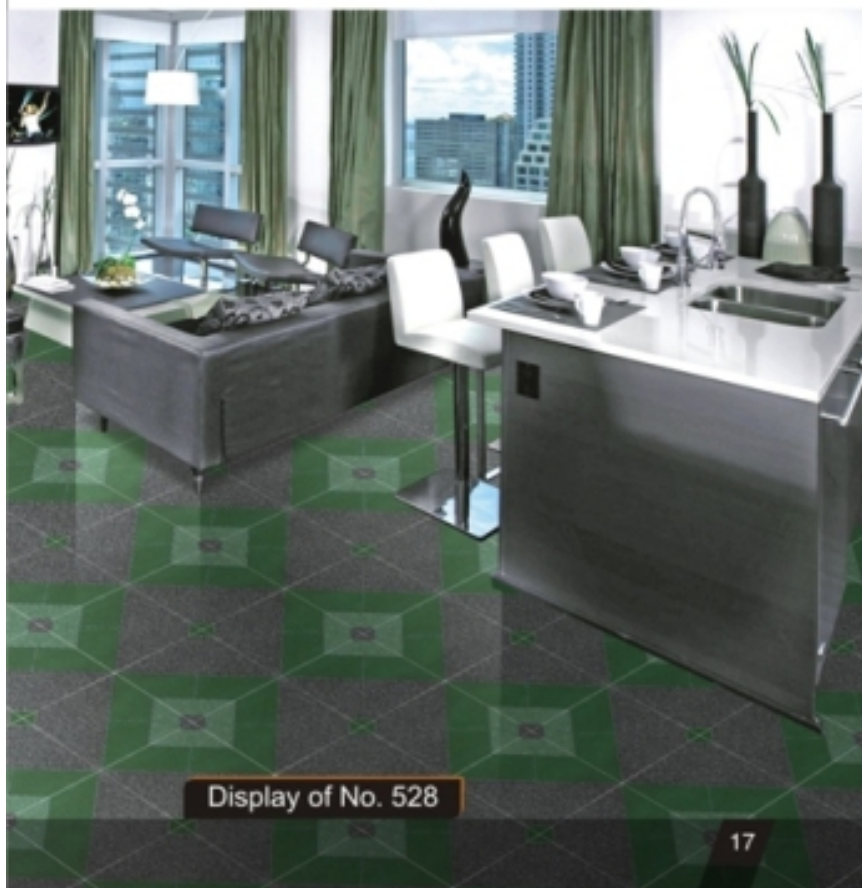


527



528

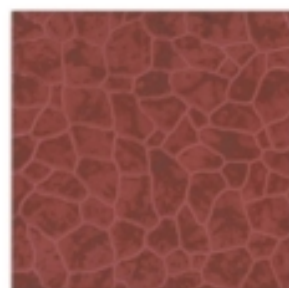
Burgundy Glossy Series



Display of No. 528



S.S.-601



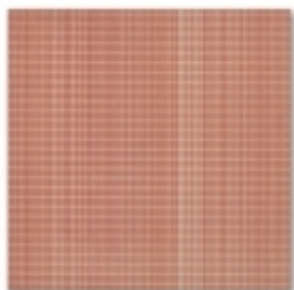
S.S.-602

Sp. Rustic Series

300 x 300 mm



5701



5702



5725



5703



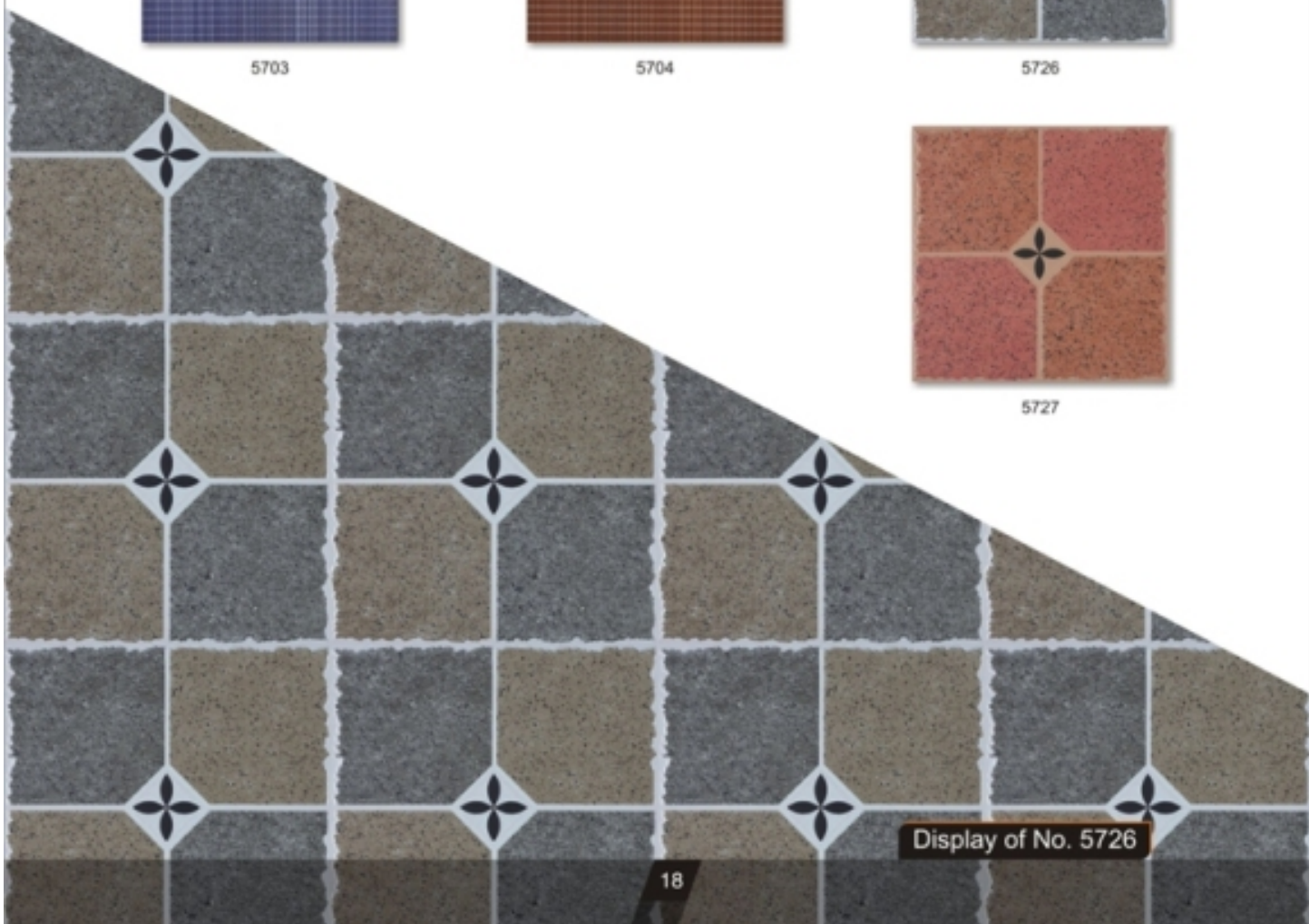
5704



5726



5727



Display of No. 5726

Net Series

300 x 300 mm

INDUS
CROMA



5801



5802



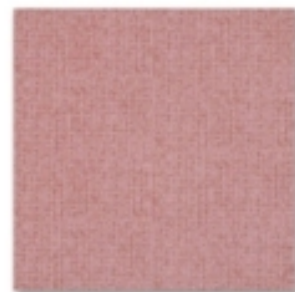
5803



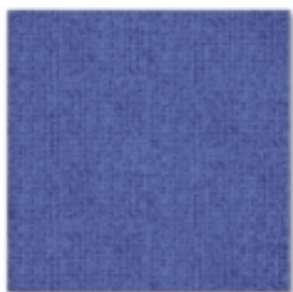
5804



5805



5806



S-5807



S-5808



S-5809



S-5810



S-5811

Sp. Rustic Series

300 x 300 mm

ukp Ceramic Tiles



5901



5902



5903



5904



5908



5909



5910



5911



5913



5915



5917



5918

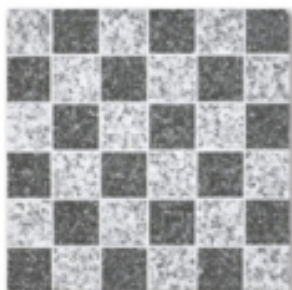


Display of No. 5910

Send Series

300 x 300 mm

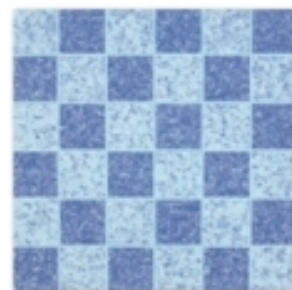
ukp Ceramic Tiles



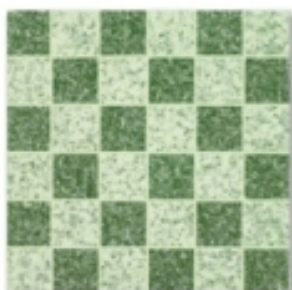
6001



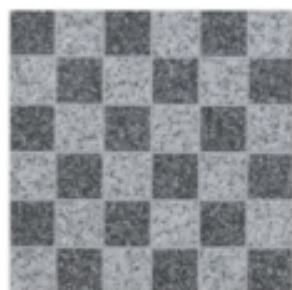
6002



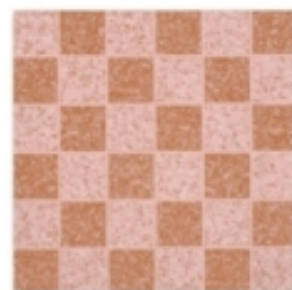
6003



6004



6005



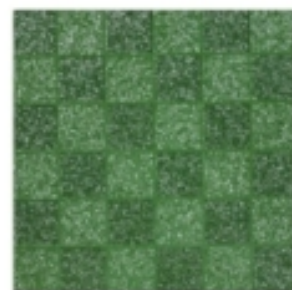
6006



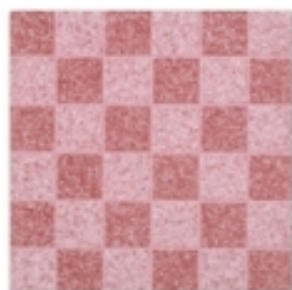
6007



6008



6009

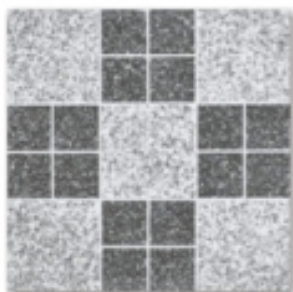


6010

Silica Series

300 x 300 mm

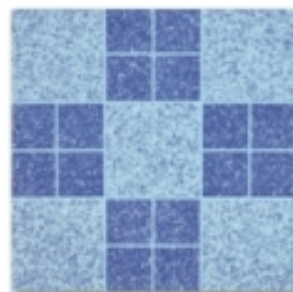
INDUS
CROMA



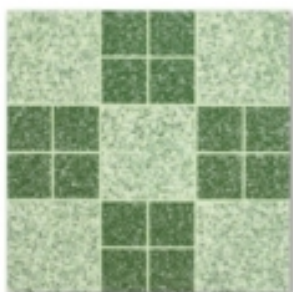
6101



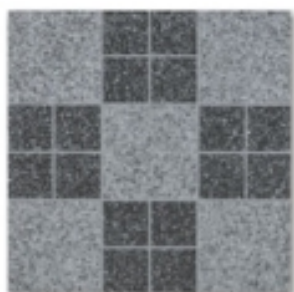
6102



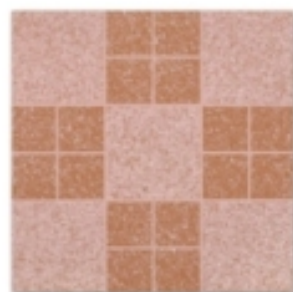
6103



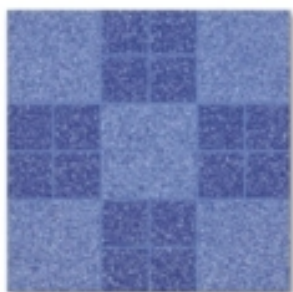
6104



6105



6106



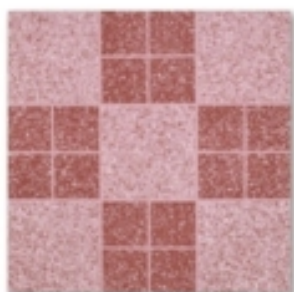
6107



6108



6109



6110

UKP INDUSTRIAL COMPANY

Mfg unit: 8-A National Highway, Morbi - 363 642 (Gujrat), India

Corporate Office:

116, Sikka Galaxy, Shrestha Vihar, New Delhi 110092, India

Tel: + (91)1143007461, + (91)1164724911, Fax: + (91)1143007461

Email: info@ukpceramic.com

Website: www.ukpceramic.com

This document was created with Win2PDF available at <http://www.win2pdf.com>.
The unregistered version of Win2PDF is for evaluation or non-commercial use only.
This page will not be added after purchasing Win2PDF.